

1:28 Electric 4WD Drift Car

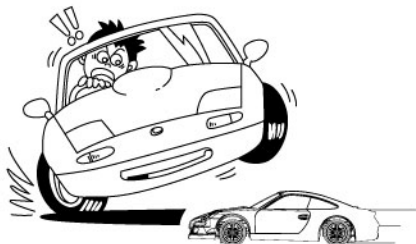


Caution: This model is not a toy, it is designed for user over 14 years of age.
Please use this instruction and the R/C system instruction at the same time.
The instruction is suitable for a type of model whose number is K969.

Safety and caution	1-2
Troubleshooting • Product introduction	2-3
Instruction of common tools and installation the electronic part...	4-5
Practice and maintenance.....	5-7
Assemble exploded view	8-18
Fittings view	19-21

Safety and Cautions

- *Never run the model on public roads or streets, as it could endanger traffic.
- *Never run the model in crowded areas, near or toward people or animals, to prevent property damage and/or personal injury.
- *Never run the model near rivers, ponds or lakes as to prevent R/C car from dropping into the water.
- *Make sure that no one else is using the same frequency as yours in your running area. Using the same frequency at the same time, whether it is driving, flying or sailing, can cause loss of control with R/C model, resulting in serious accidents.
- *To avoid a runaway R/C model or loss of control, always follow the procedure below:
 1. Fully extend transmitter antenna.
 2. Switch on transmitter.
 3. Switch on R/C model.
- *Follow reverse procedure to shut down.
- *Never touch or hinder rotating tire.
- *Never run R/C model in the rain or let run over puddles, as water may cause trouble with R/C model.
- *Motor and battery get very hot after running. Take care when handle them.
- *Retract transmitter antenna when not in use.
- *Remove the batteries from model and transmitter when they are not in use.



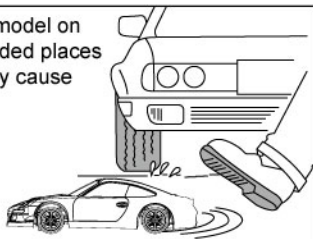
Cautions when handling batteries

- *Do not dismantle the battery or charger and do not cut any battery cables. This may cause short-circuit and/or damage to the product.
- *Change battery with compatible charger following proper procedure that is called out in the instructions. Do not modify charger or charge battery in improper way.
- *Do not recharge battery that is still warm from use as it may damage the battery. Allow the battery to cool off prior to recharging.
- *Make sure to disconnect charger cables from R/C model and electric outlet when not in use.
- *Remove transmitter battery when not using it for a long time as it may leak and damage transmitter when left for a long period.
- *Never incinerate used batteries, as they can explode causing serious accidents.



Safety precautions

Do not operate the model on public roads, in crowded places or near infants, it may cause accidents or injury.



As the product includes small and sharp parts, assemble and store this product only in places out of the reach of children.



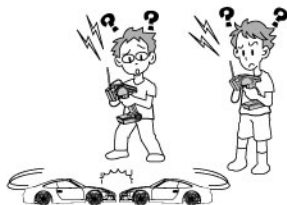
As the front end of the antenna may be dangerous, do not aim it toward faces.



During the car running and after, the motor will be hot. Please do not touch it until it has had time to cool down.



Don't use the same frequency with others at the same time. Or the car will lose control or even lead to serious accidents.



Troubleshooting

Description	Cause	Solution
The car does not operate at all.	Transmitter or receiver is off.	Turn on both transmitter and receiver.
	Batteries are not placed properly in the transmitter.	Place batteries in the transmitter properly.
	The drive battery is not charged enough.	Charge the drive battery.
The car does not follow your operation and control distance not enough long.	Someone else is using the same radio frequency as you are using.	Change your radio frequency to the one no one else is using, wait until the driver using the same radio frequency finishes driving, or drive your car at a different place.
	There is not enough power in the transmitter or receiver batteries.	Replace the transmitter batteries with new ones and charge the drive battery.
	Not tighten antenna on the transmitter/not fully extend antenna.	Make sure insert antenna into the transmitter and fully extend antenna.



CAUTION

- * Please observe the operation manual or packing explanation to install and use, and some parts should be installed by adults.
- * The product contains small parts, it may cause swallow or choke.
- * Never run an R/C model in the seep or rain, moisture areas, or it may cause the parts malfunction.
- * Please throw the wrapper in time to avoid danger for the children.
- * Regularly examine for damage to the charge, wire, plug, bodyshell or other parts. In the event of any damage, it must not be used until the damage has been repaired.
- * The charge, battery box and battery must insert with the appointed power source of product symbol same.
- * This product must only be used with the original collocation charger.
- * The product is contains the functional outshoots are may be dangerous to the children.

- * Apart the charger and toy before clean.
- * As the front end of the antenna may be dangerous, do not aim it toward anyone's body, face or eyes.
- * Batteries are to be inserted with the correct polarity.
- * Use the "AA" non-rechargeable or "AA" rechargeable batteries.
- * Non-rechargeable batteries are not to be recharged.
- * Rechargeable batteries should only be charged under adult supervision.
- * Rechargeable batteries must be removed from model before charger.
- * Different types of batteries or old and new batteries are not to be mixed.
- * Exhausted batteries are to be removed in time.
- * The supply terminals are not to be short-circuited.
- * Never short circuit the batteries. throw it in a fire or attempt to open their outer casings.
- * Please remove the batteries when not in use.
- * Please retain these instructions for future reference.

Product Introduction

Item number: K969 1:28 Electric 4WD Drift Car

Vehicle size: length 180mm X width 80mm X height 55mm

Wheelbase: Standard 98mm (variable 102mm)

Front and rear wheel minimum distance: Standard 73mm (77mm)

Ground clearance: Standard 3.6mm (adjustable)

Transmission ratio: Standard 1:4.83 (Motor gear 15T, 17T, 19T, 21T; 27T and 29T gear reduction are free to mix)

Tire diameter : 25mm; wheel width: 8.5mm

Electrically tunable receiving server: two in one circuit

Motor: 130 brush motor

Remote controller: 2.4G remote controller

Remote control distance is greater than or equal to 100 meters:

Remote controller battery: 4 AA batteries (sold separately)

Battery: lithium battery 7.4V 400mAh, sufficient energy, explosive strength

Charger: lipo balance

Charging time: about 1 hours and a half

Use of time: 30 minutes

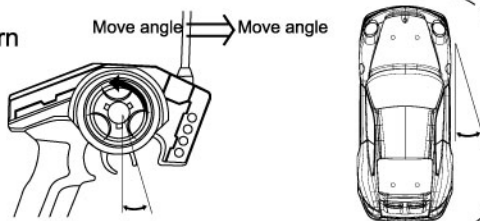
Server: independent 5 grams of digital servo with the steering gear steering protection, sensitive, quick response

Car shell: antiknock PVC color printing car shell, beautiful Crashworthiness

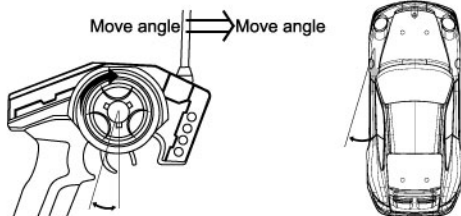
Four wheel independent suspension system, sealing gearbox. Some parts can be general Kyosho car parts, shape simulation, for the crowd is wide

Proportional R/C Using Instruction

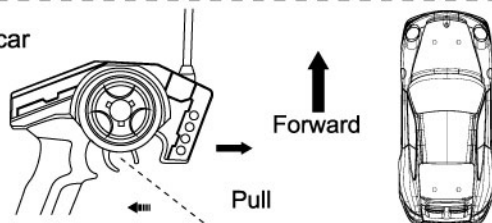
- ① Turn left the steering wheel,the car will turn left.Turing left angle can be adjusted by the degree of wheel twisting.



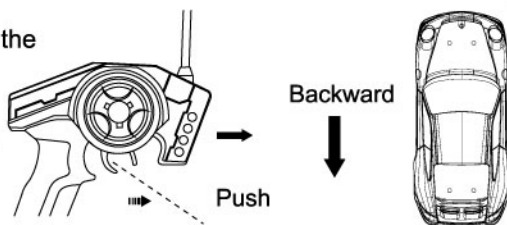
- ② Turn right the steering wheel,the car will turn right.Turing right angle can be adjusted by the degree of wheel twisting.



- ③ Pull the throttle trigger backward,the car will forward.Adjusting the angle of throttle trigger can adjust forward speed of the car.During the car forward,quickly push the trigger forward to stop it.

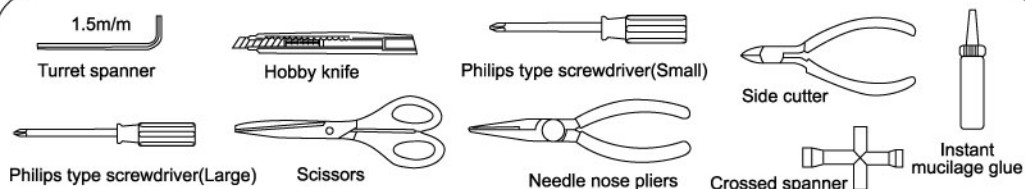


- ④ Loosen the trigger to make it return the neutral position when brake. Push the throttle trigger forward,the car will backward.Adjusting forward angle of throttle trigger adjust backward speed of the car.



Introduce the common tools and assemble the electron parts

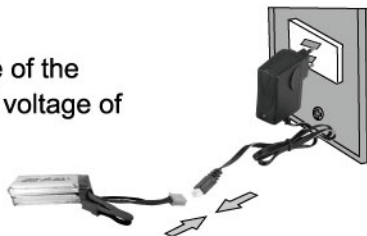
Tools needed for assembly



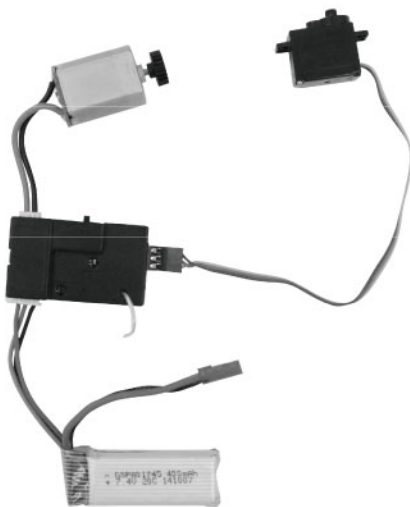
Charge caution

CHARGING BATTERY

- 1) Please firstly check and confirm input voltage of the charge is consistent with local voltage, output voltage of the charge is consistent with battery voltage.
- 2) Battery must be used up before you charge, Charging time is not more than 1.5 hours.
- 3) Be careful to make sure there is adult to control when charging.



Assemble the electron parts



PRACTICE AND MAINTENANCE

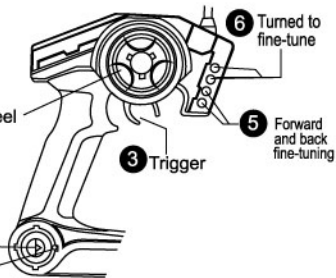
Operating program

1> Turn on the switch **1** of transmitter and make sure the power indicator is **2** steady light, then turn on the car.

2> Put the car on the frame or stand. If wheel is running self-motion, adjust the trim **5** of transmitter until the wheel is still.

3> Slip the trigger **3** of transmitter slowly, you can observe the car whether it can go ahead or go back.

- 1** Remote control switch
- 2** Power indicator light



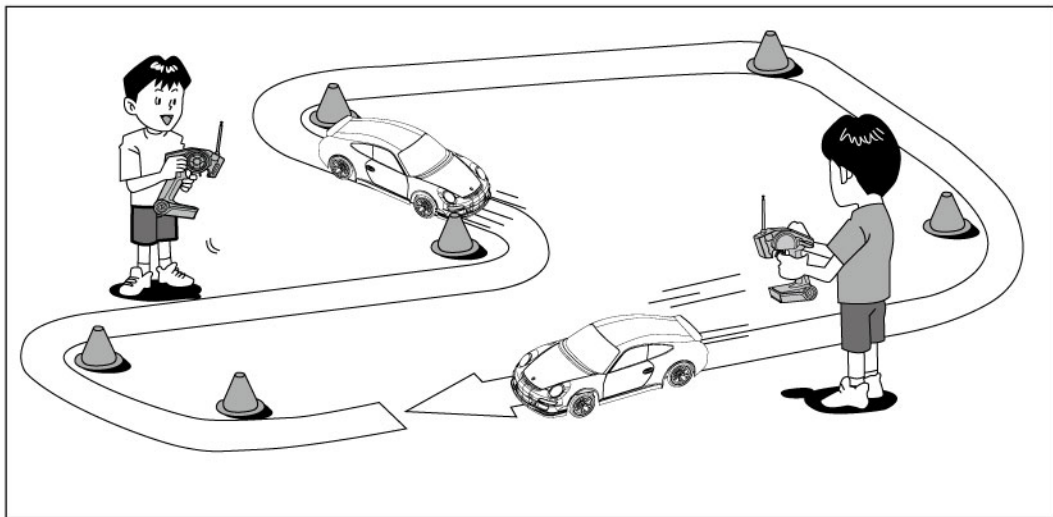
4>Turn steering adjusting wheel ④ of transmitter to left or right,and make sure the steering of front wheels follow the instruction.

5>Put the car on the ground and stand behind the back of the car. Squeeze the throttle trigger ③ of transmitter gently.If the car does not move in a straight line,you can adjust the trim ⑥ of transmitter until the car moves in a straight line.

6>OK,ready to run.



Practice

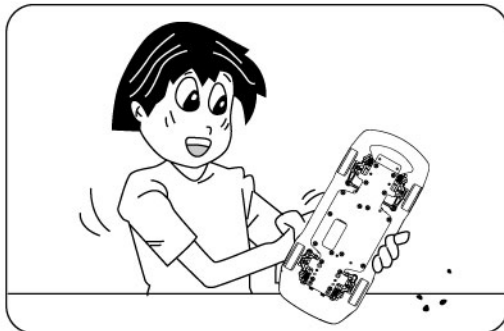


Let's practice!Make R/C car circuit at a wide and safe location using corner pylons(separately available),empty cans or such.Running fast at straight section and slow down at curved section is a basic speed control technique useful when driving R/C car.

Maintain



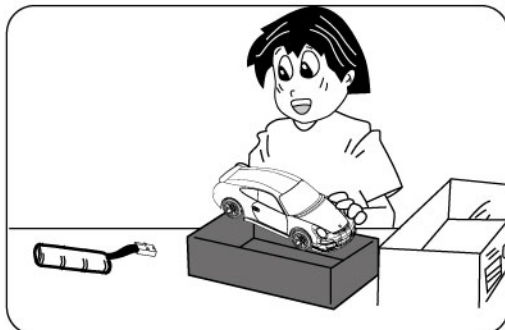
When the car is not in use, you should remove the battery from the car.



Completely remove sand, mud, dirt etc.

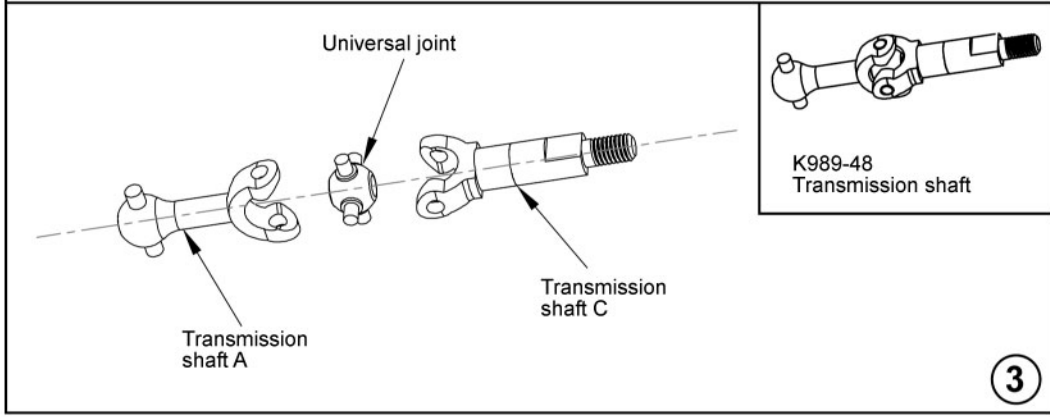
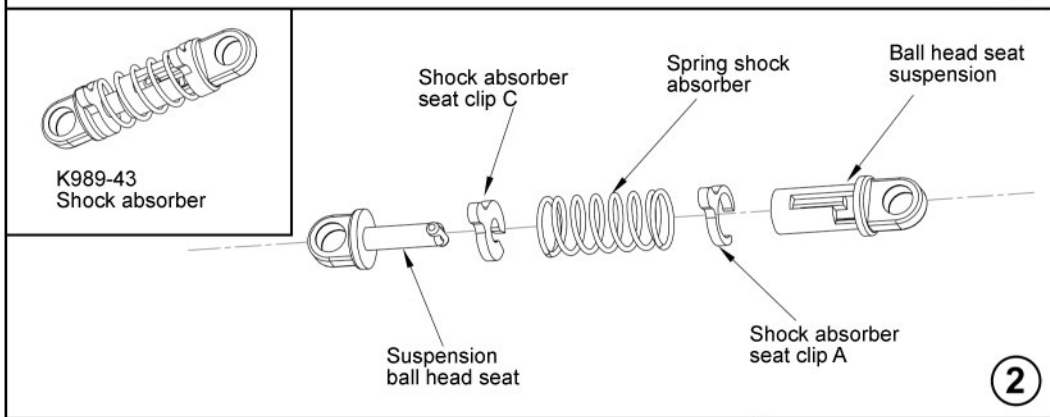
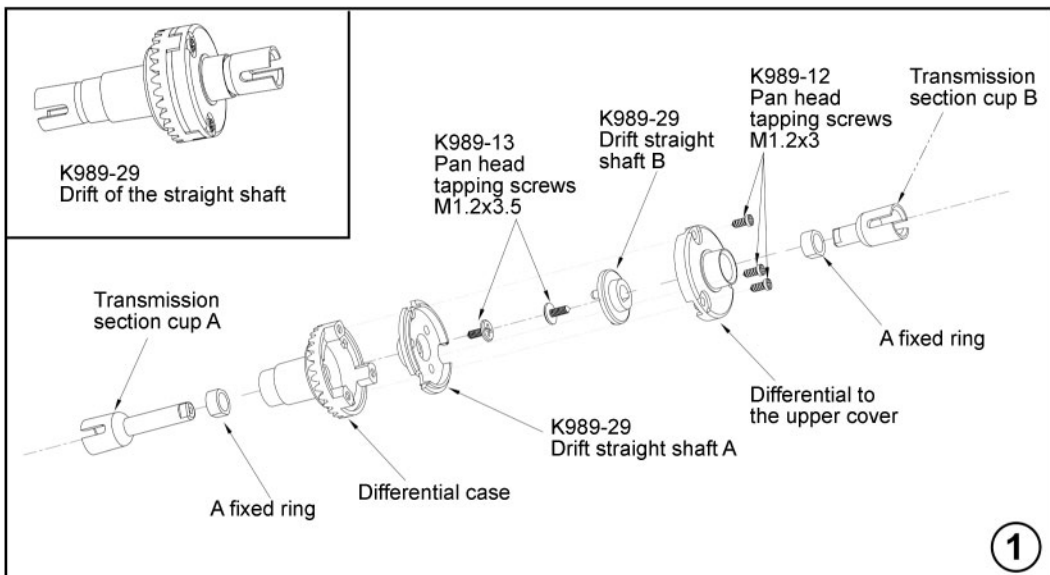


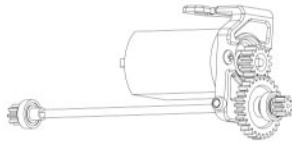
Metal outside should apply the rust prevention oil.



Store the car and batteries separately when not in use.

Assembly Exploded Diagram





Motor assembly

K989-06
130Electric
machinery

K989-37
Motor
positioning
seat

K989-32
Motor gear

K989-14
Pan head
machine teeth
M2x4

K989-30
After the driving gear
(short)

K989-30
Before the
active tooth (short)

K989-03
Central
transmission shaft

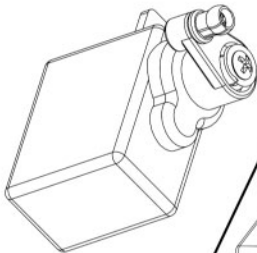
K989-09
Bearing
2x5x2.5

K989-08
Bearing
3x7x2

K989-31
Reduction gear

K989-08
Bearing
3x7x2

4



Steering gear
assembly

K989-27
Steering buffer
block B

K989-44
Ball head

K989-16
Pan head
tapping screws
M1.3x7

K989-15
With the meson
self tapping screws
M1.7x8

K989-58
5g Grams of
steering gear

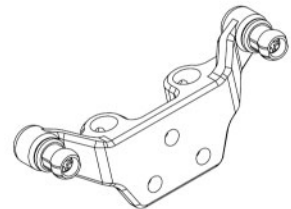
K989-27
Steering buffer
block A

K989-27
Duffer spring

5

K989-25
Shock absorber
bracket

K989-44
Ball head

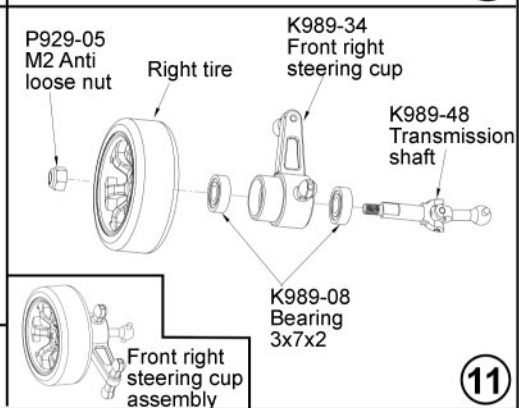
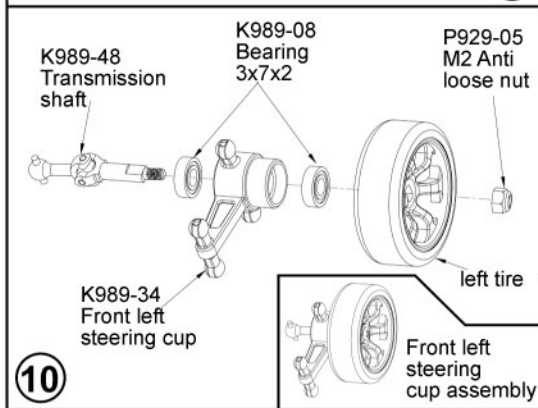
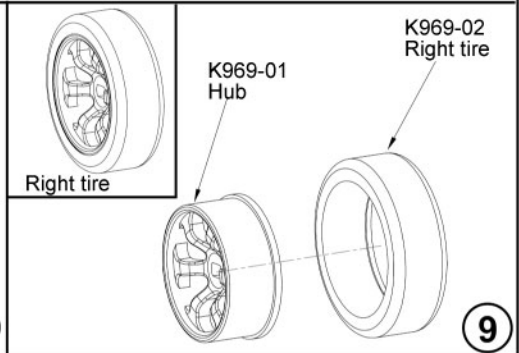
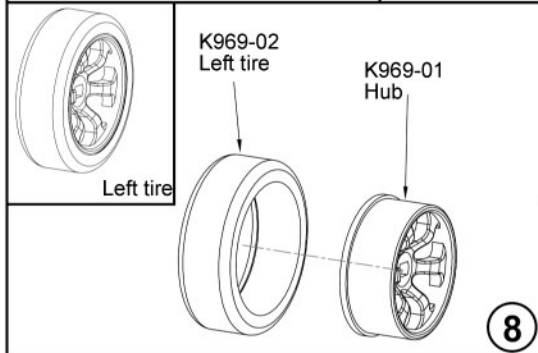
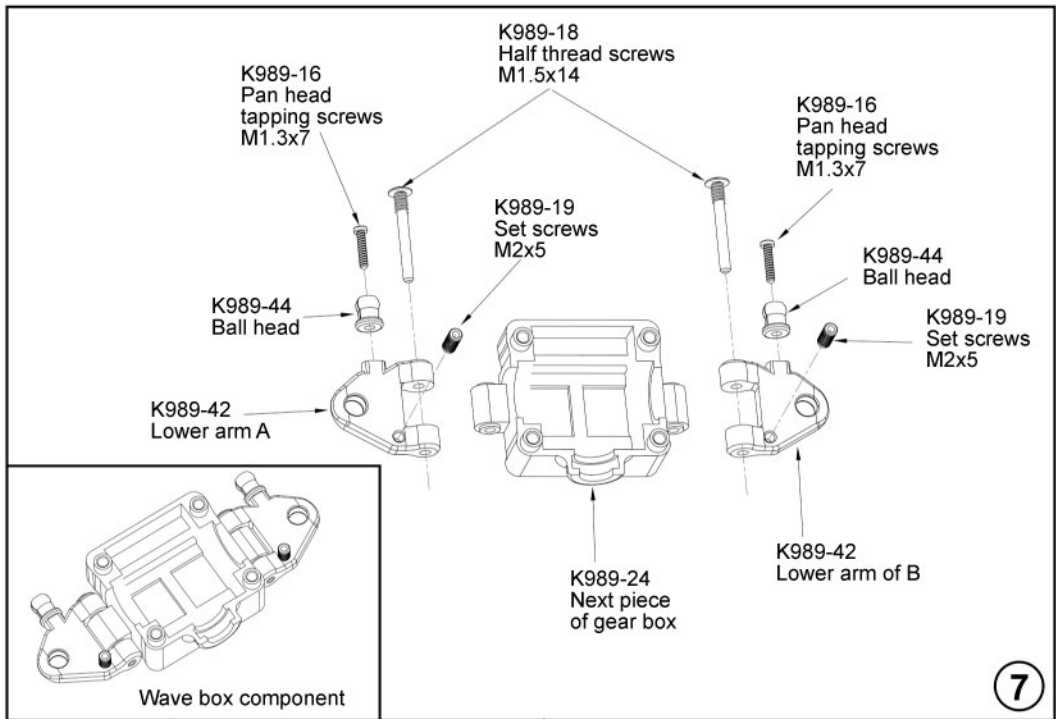


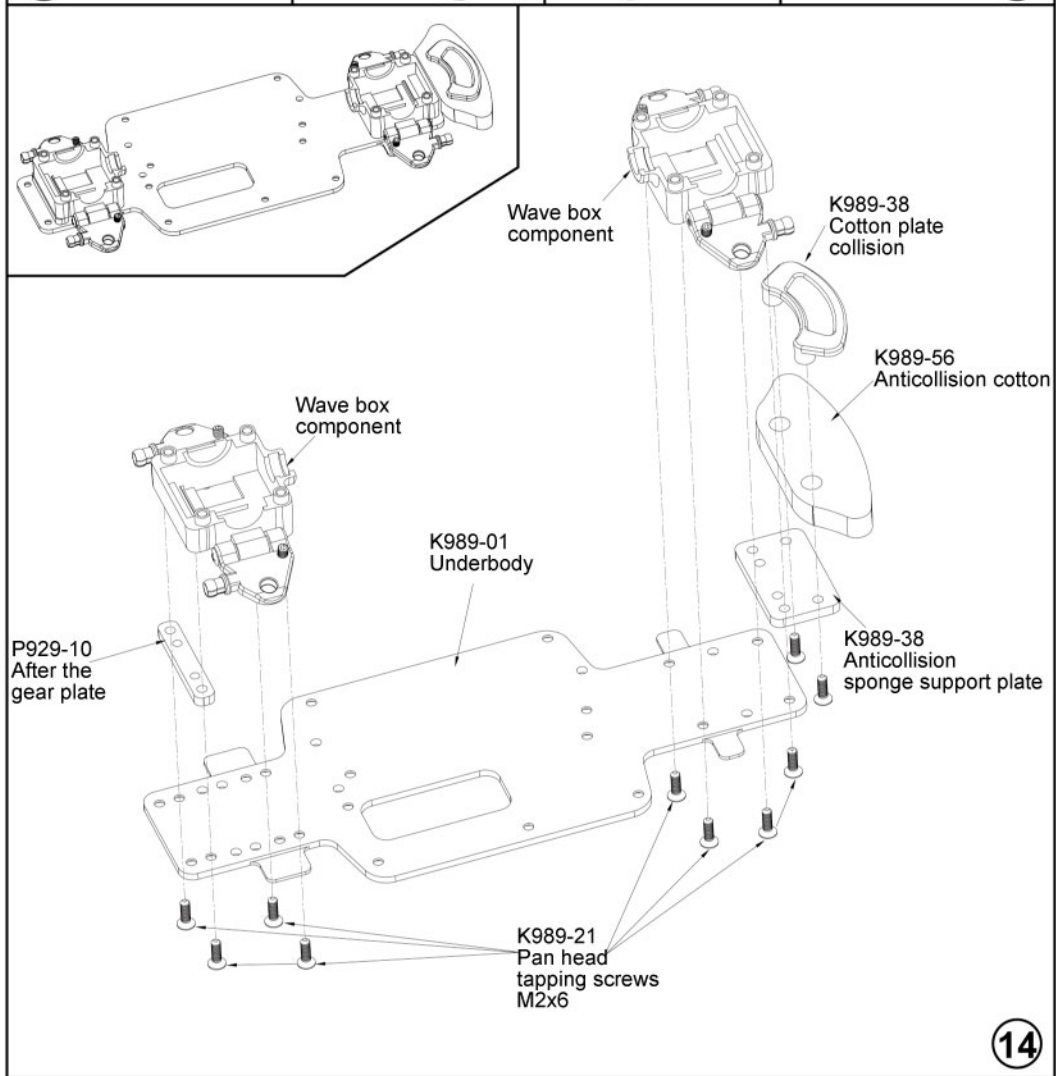
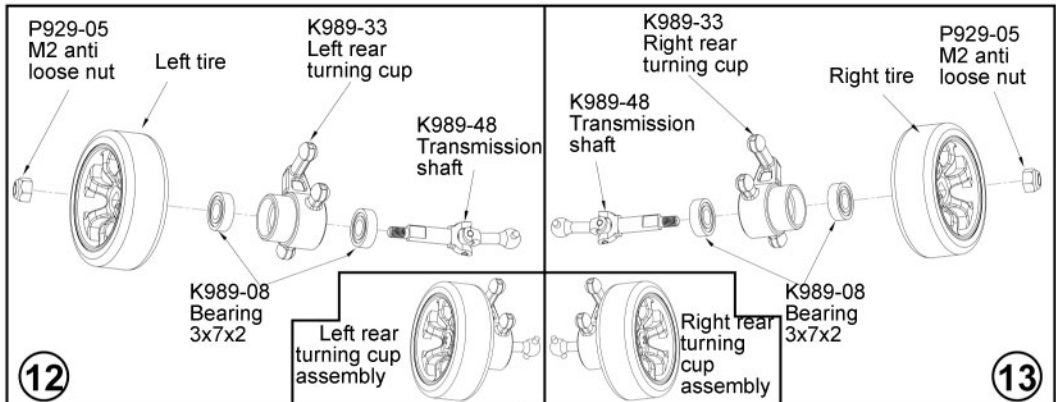
Shock absorber
bracket assembly

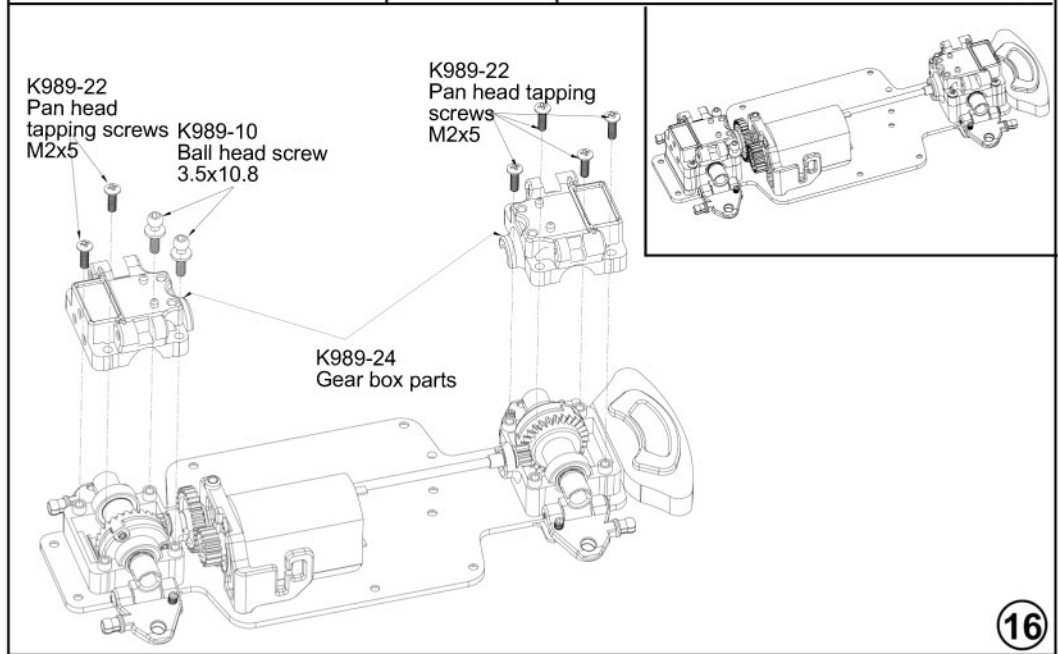
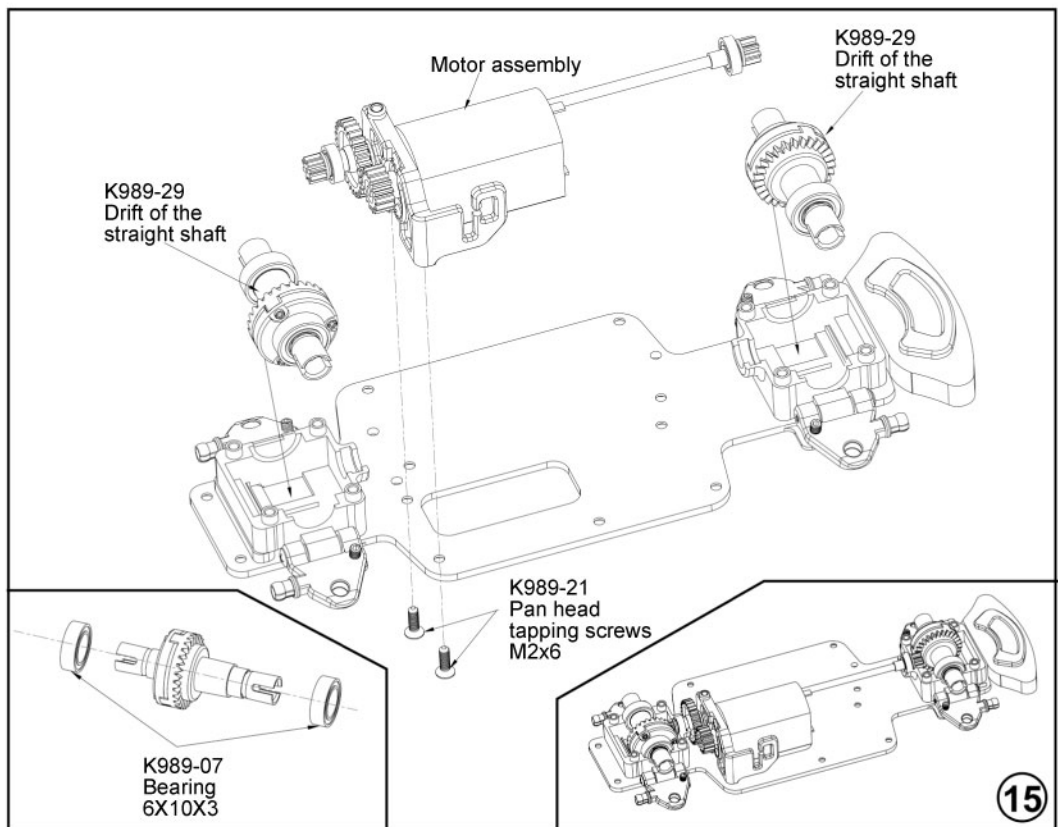
K989-44
Ball head

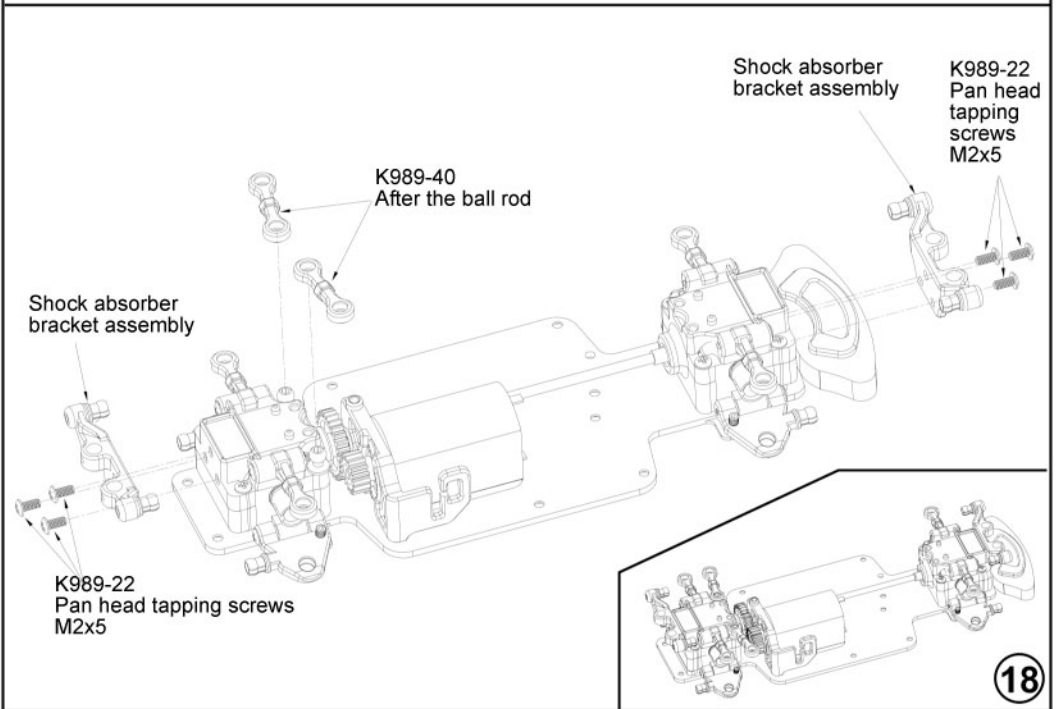
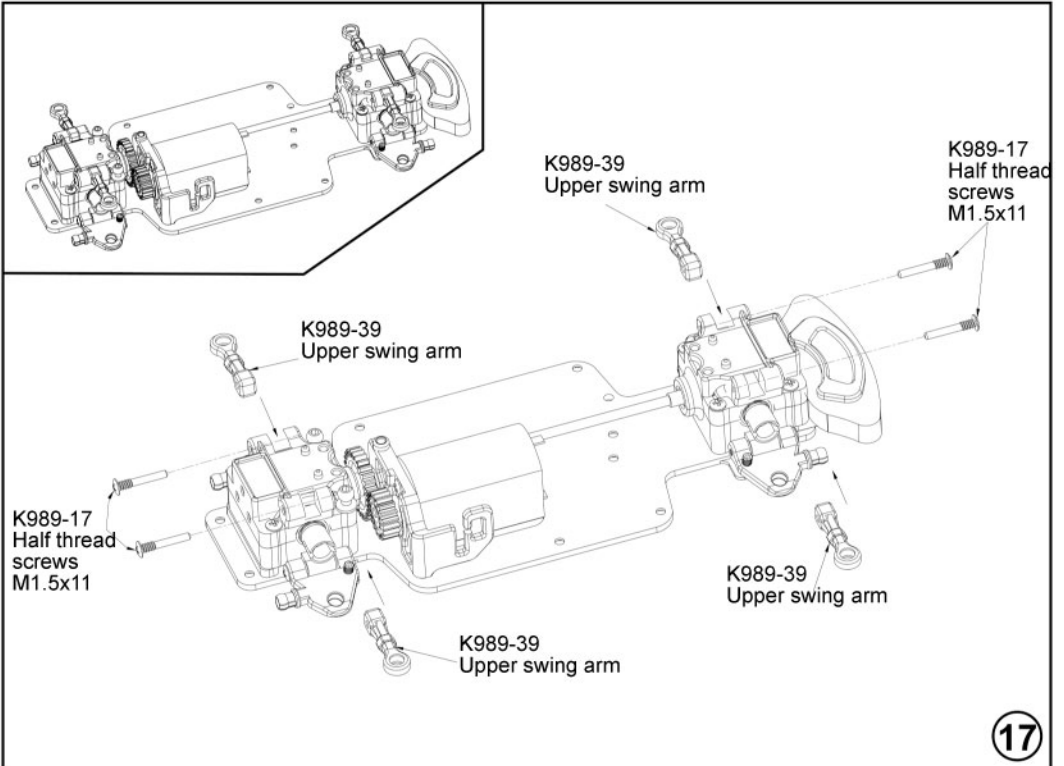
K989-16
Pan head
tapping screws
M1.3x7

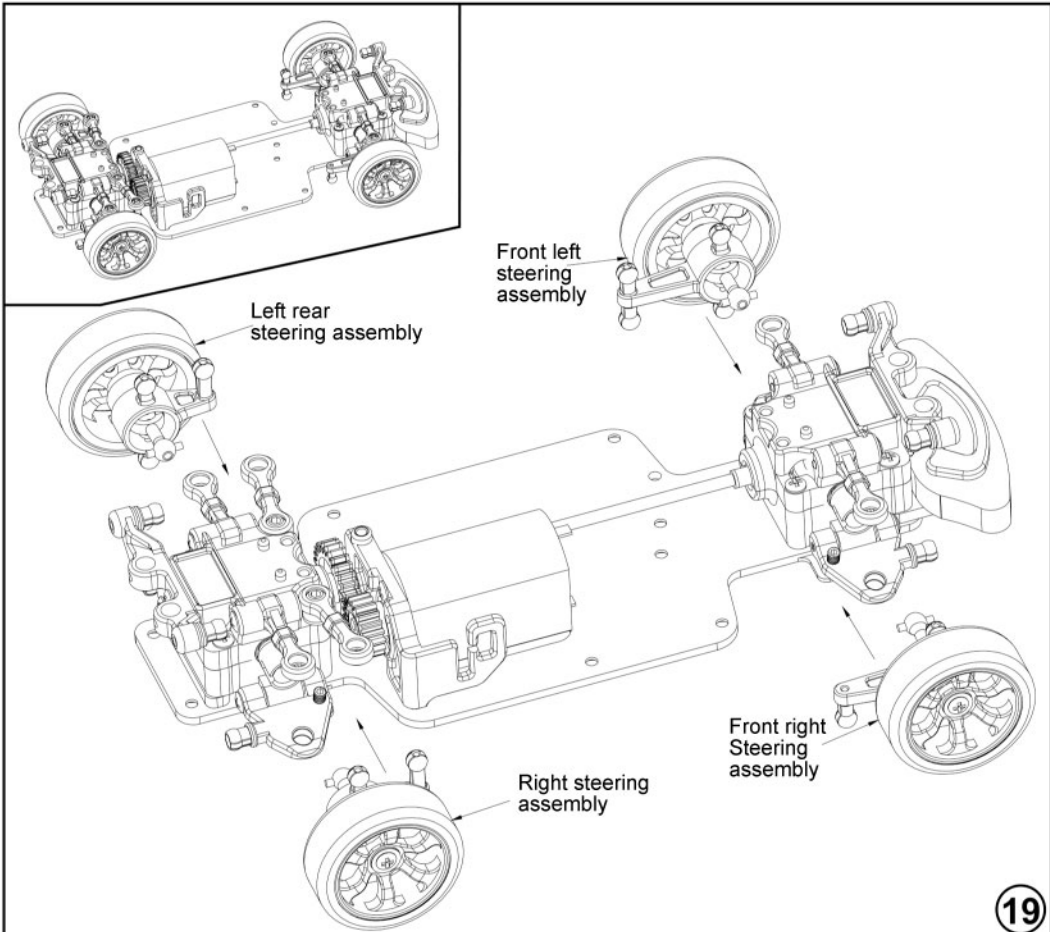
6



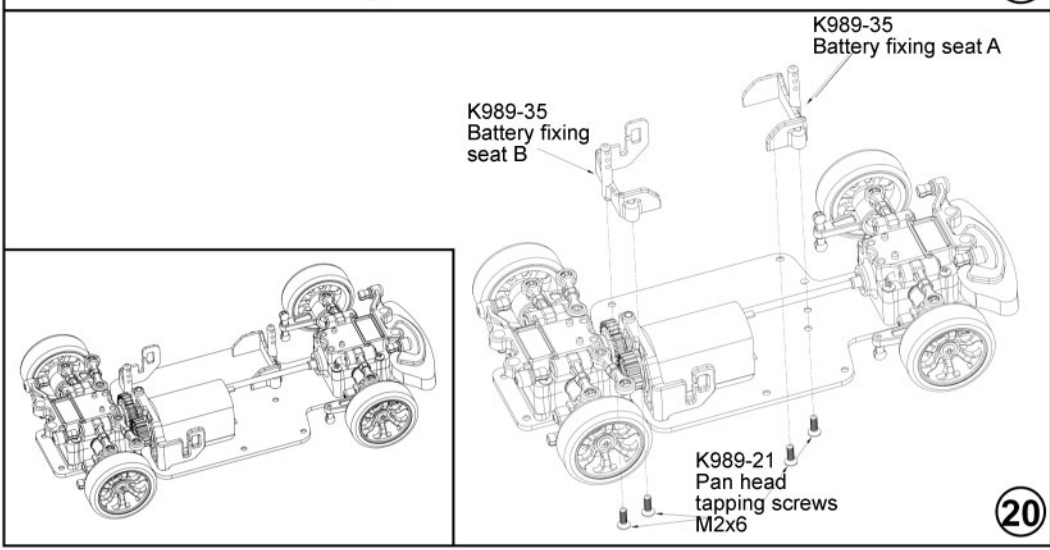






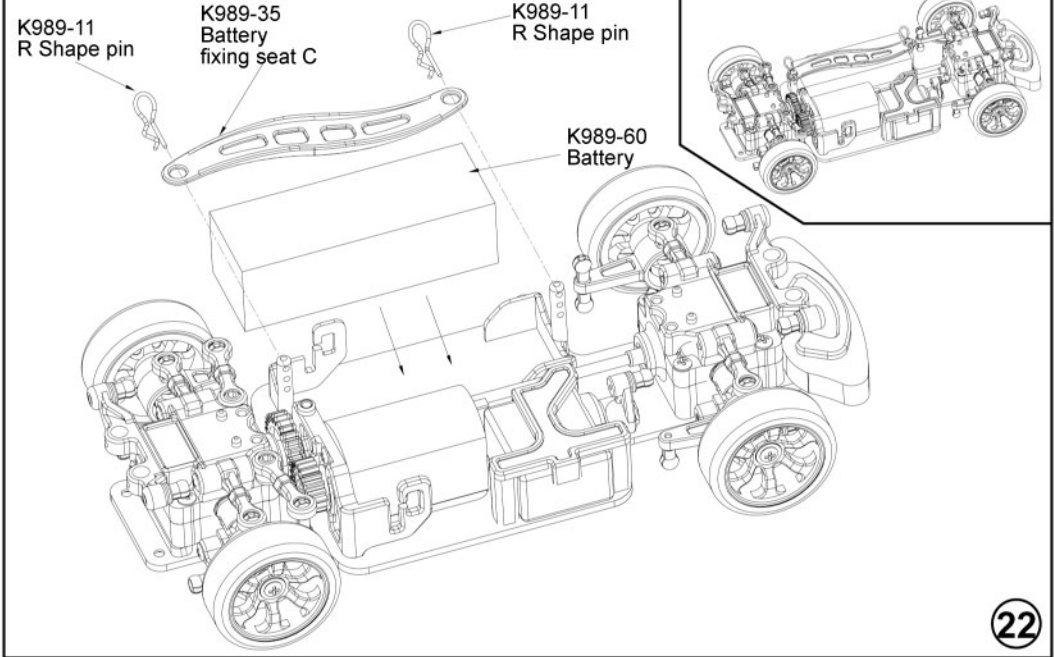
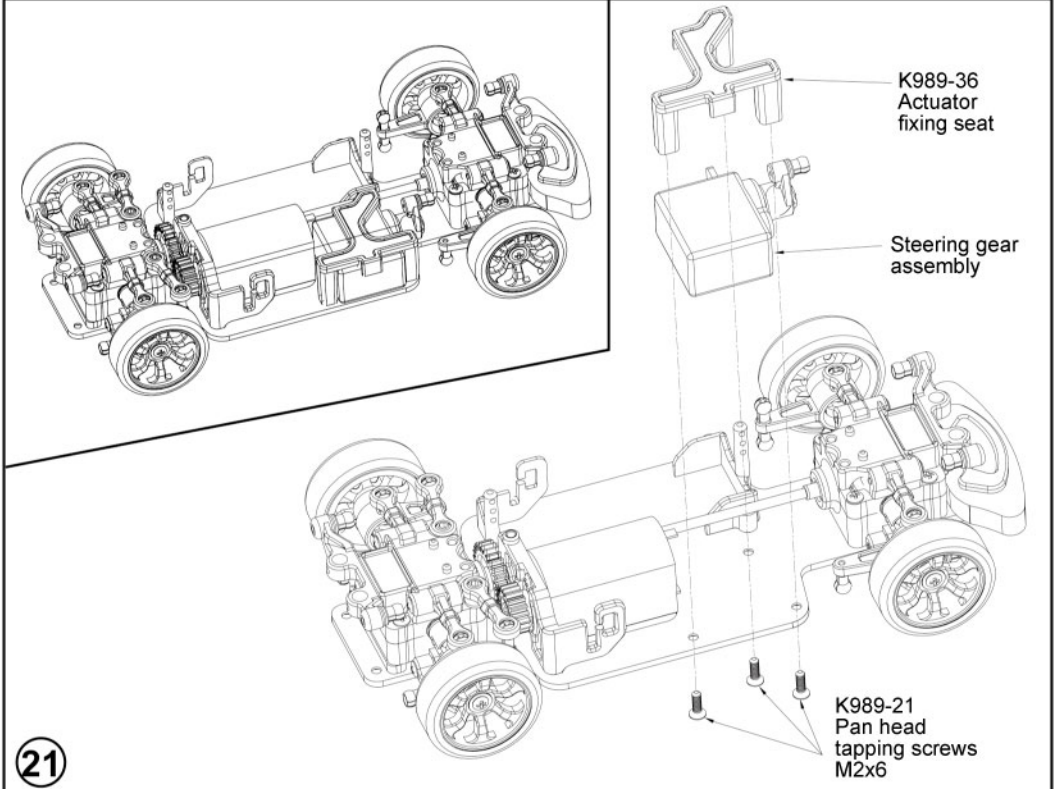


19

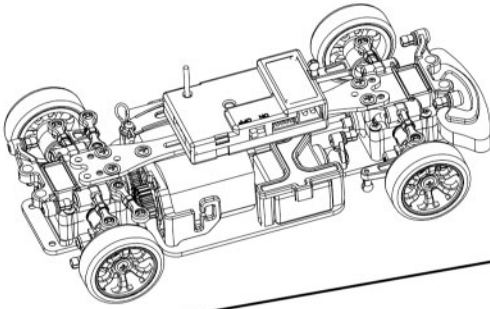


20

21



22



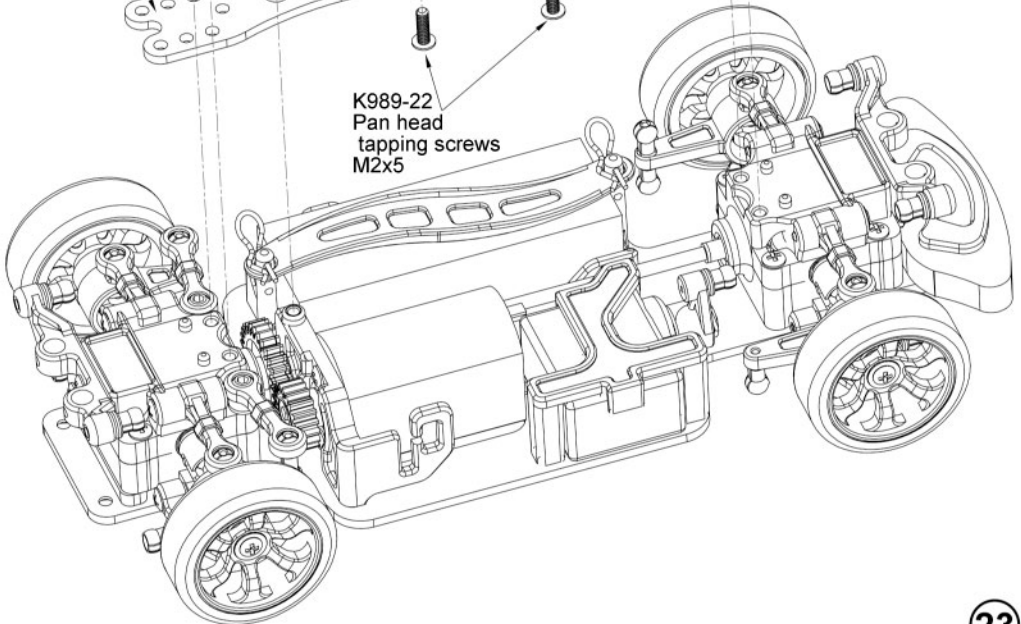
K989-23
Pan head
tapping screws
with meson
M2x6

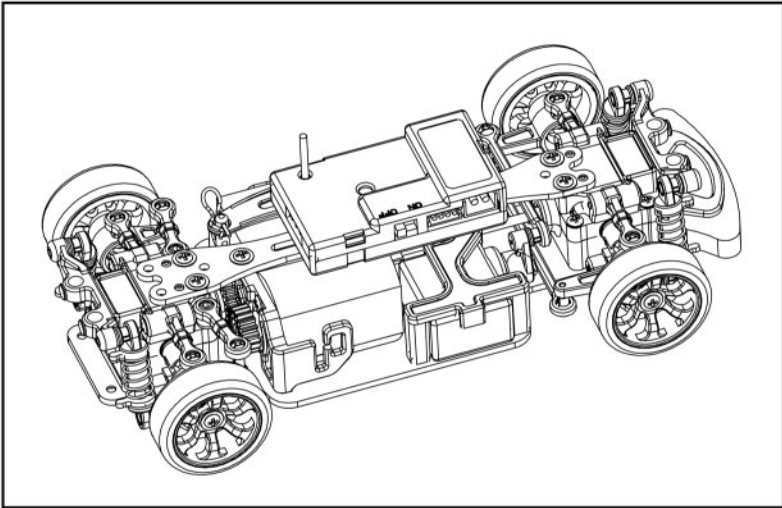
K989-52
Two in one
circuit board

K989-23
Pan head
tapping screws
with meson
M2x6

K989-02
Two floor

K989-22
Pan head
tapping screws
M2x5



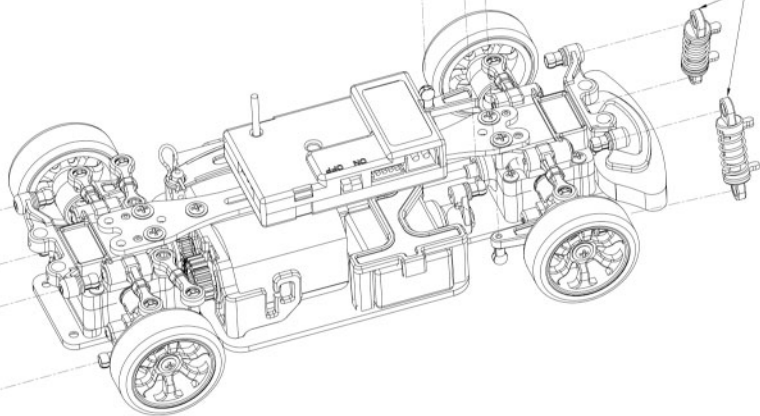


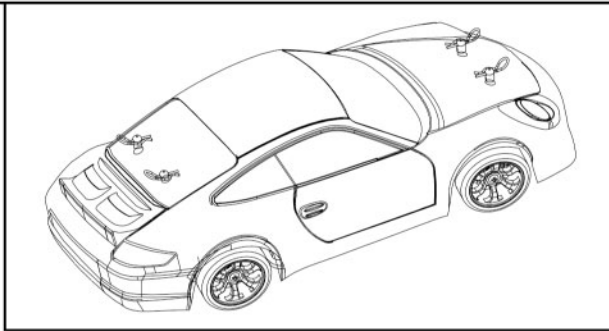
K989-41
To turn to
pull rod

K989-41
Steering engine
pull rod

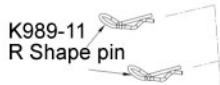
K989-43
Shock absorber

K989-43
Shock
absorber

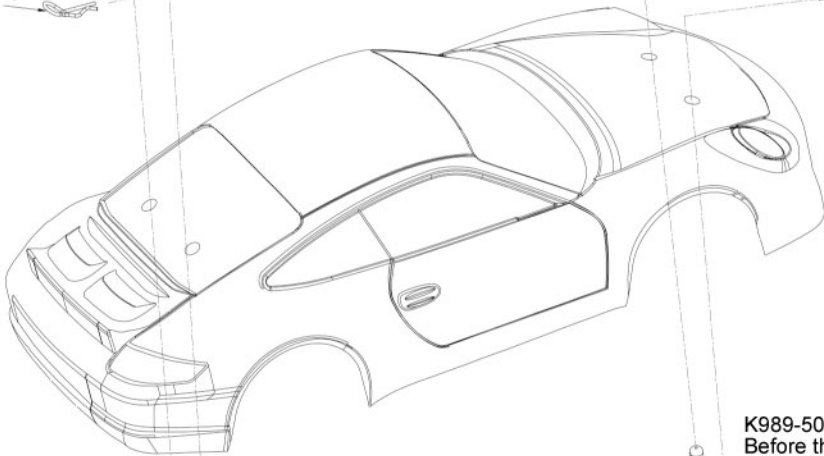




K989-11
R Shape pin



K989-11
R Shape pin

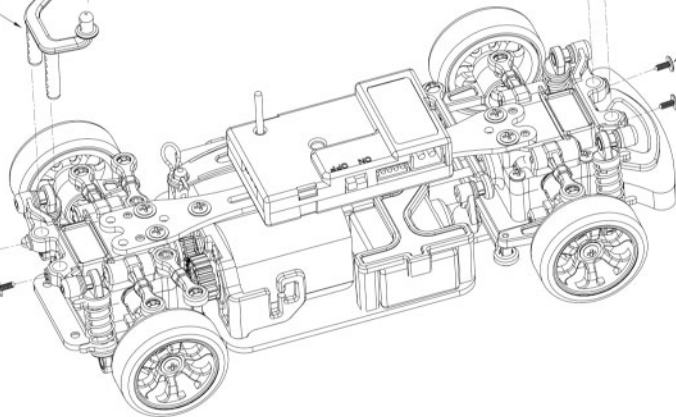


K989-50
Before the
car shell column

K999-03
After the car
shell column



K989-13
Pan head
tapping screws
M1.2x3.5



K989-13
Pan head
tapping screws
M1.2x3.5

Sale parts view

K969-01



Drift car wheel hub

K969-02



Drift tire

K969-29



Drift of the straight shaft

K979-05



Car shell gasket
12x3x4

K989-01



Underbody
127.5X55X1.5

K989-02



Two floor 99x13x1.5

K989-06



130 Electric machinery

K989-07



Bearing 6x10x3

K989-08



Bearing 3x7x2

K989-09



Bearing 2x5x2.5

K989-10



Ball head screw
3.5x10.8

K989-11



R Shape pin

K989-12



Pan head tapping screw
M1.2x3

K989-13



Pan head tapping
screws M1.2x3.5

K989-14



Pan head tapping screw
M1.2x3

K989-15



Pan head tapping
screws M1.2x3.5

K989-16



Pan head tapping
screws M1.3x7

K989-17



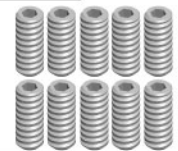
Half thread screws M1.5x11

K989-18



Half thread screws
M1.5x4

K989-19



set screw M2x5

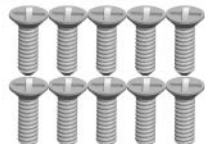
Sale parts view

K989-20



Pan head with meson self-tapping screws M1.2x8

K989-21



Flat head self-drilling screw M2x6

K989-22



Pan head tapping screws M2x5

K989-23



Pan head tapping screws with meson M2x6

K989-24



Gear box

K989-25



Suspension bracket

K989-27



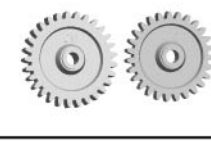
Steering gear buffer accessories

K989-30



Before and after active tooth

K989-31



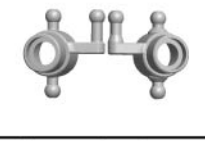
Reduction gear

K989-32



Motor gear

K989-33



After turning the cup

K989-34



Before turning to the cup

K989-35



Battery seat assembly

K989-36



Actuator fixing seat

K989-37



Electric motor fixing seat

K989-38



Cotton plate collision

K989-39



Upper swing arm

K989-40



After the ball rod

K989-41



Pull rod assembly

K989-42



Lower arm

Sale parts view

K989-43



Shock absorber

K989-44



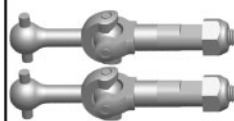
Ball head

K979-45



Nut M2

K989-48



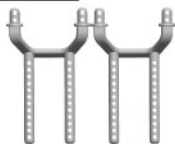
Transmission shaft

K989-50



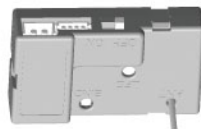
Before the car shell column (short)

K989-51



After the car shell column (long)

K989-52



Two in one circuit board

K989-56



Anticollision cotton
44x18x5

K989-58



5g Digital servo

K989-59



Charger

K989-60



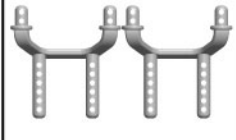
Battery

K989-61



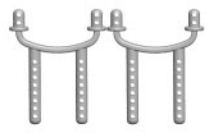
Remote controller

K999-03



After the car shell column (short)

P929-02



Before the car shell column (long)

P929-10



After the gear plate